

Login Instructions


1. When you click on the online registration link it will take you to this page:

The screenshot shows the registration page for the Maryland Soccer Foundation. At the top, there is a navigation bar with the following links: HOME, ABOUT US, TOURNAMENTS, ADULT, YOUTH, CAMPS, PARTIES & SPECIAL EVENTS, SCHEDULES, and CONTACT US. The page is titled "Maryland Soccer Foundation - Registration". Below the title, there is a welcome message: "Welcome to the registration process for Maryland Soccer Foundation!" followed by a note: "You must be logged in to proceed with registration. If you do not have a user account, please create one." The registration form is titled "Registration Login" and includes a "Sign In" button. The form fields are: User ID/Email (agavett@mdsoccerplex.org), Password (masked with dots), and a "Sign In" button. There are also social media login options: "Sign in with Facebook", "Sign in with Google+", and "Create New User Account". A "Forgot your password?" link is located below the "Create New User Account" button. On the right side of the form, there is a "demosphere TeamNet" logo and a description: "Maryland Soccer Foundation uses your universal Demosphere TeamNet™ Login, allowing you to securely save and access personalized content for this, and any other networked website."

2. As you can see it provides you with TWO options:
 - a. Create an account (Please follow steps 3 & 4)
 - b. Login with an existing account (Please go to step 5)
3. IF you are a NEW user and have never registered for any program with the Maryland SoccerPlex, Discovery Sports Center or SAM Soccer please choose this option. When you choose this option it will take you to this page:

Create Your New User Account

Option 1:
Create Your Account via Facebook Login

 Sign in with Facebook

Option 2:
Create Your Account Manually *(ALL FIELDS REQUIRED)*

First Name

Last Name

Login Email

Password

Re-Type Password

Create New Account!

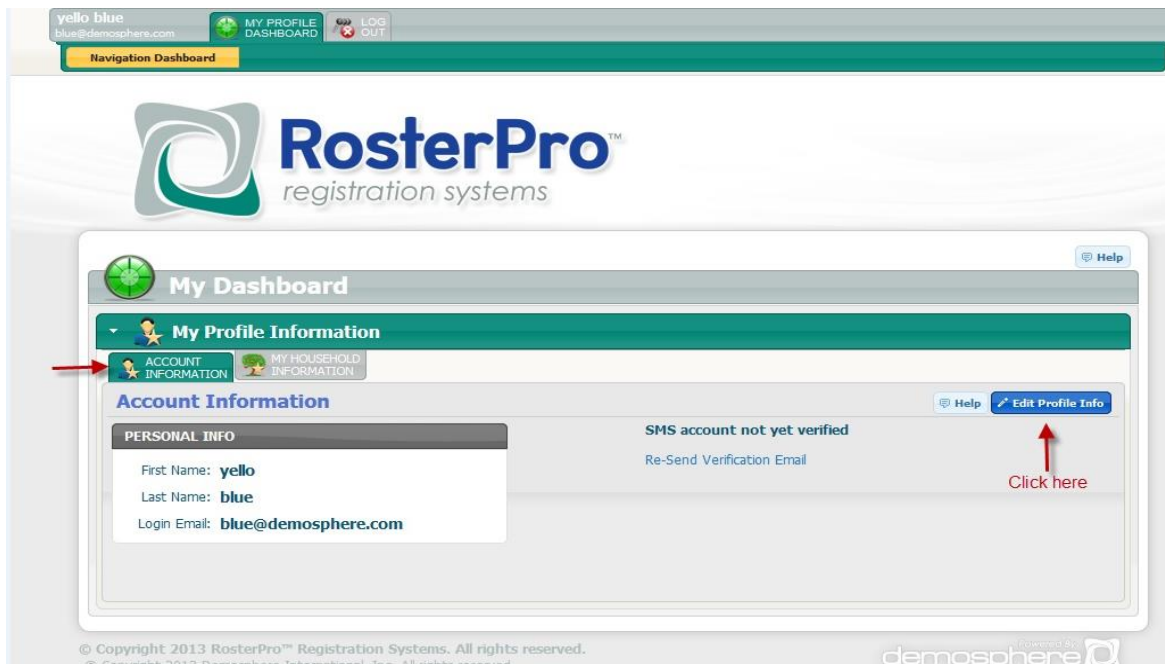
Cancel

4. You have the option to create an account via Facebook, Google+ or manually. Once you have created an account follow the on-screen instructions for registration.
5. If you have registered before for a Maryland SoccerPlex, Discovery Sports Center or SAM Soccer program please click Forgot Password in the Login with Existing Account section.
6. Then follow the onscreen instructions to set up a new password for your household. All the household data from the old system has been migrated, but we could NOT transfer over your passwords, so thus why you have to create a new password.
7. Once you have set up your new password login as normal and follow the on-screen instructions for registration.

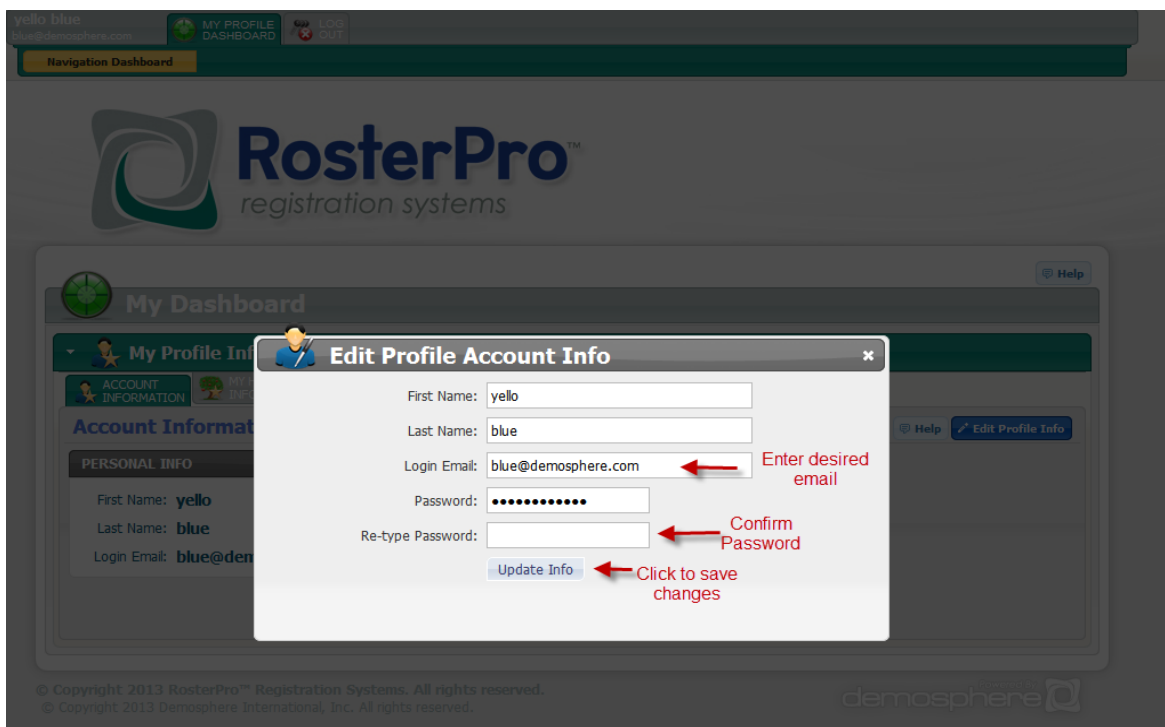
PLEASE NOTE: The SAM offices WILL NOT be able to provide you with your password over the phone anymore. If you forget your password in the future simply follow steps 5-7 above. Additionally we will no longer be able to change your login email. Please follow the instructions below to change the email associated with your login.

Changing Your Login Email

1. Log into your account using your current email and password.
2. From the "Account Information" screen, this is the first screen that loads after you log in, select the blue "Edit Profile Info" button on the right hand side.



3. Under the pop-up window, "Login Email field" write the new email you desire to use.
4. Confirm password
5. Click "Update Info" to save.



6. Verify in the "Personal Info" box that the information was saved.



My Dashboard [Help](#)

My Profile Information

ACCOUNT INFORMATION MY HOUSEHOLD INFORMATION

Account Information [Help](#) [Edit Profile Info](#)

PERSONAL INFO	SMS account not yet verified
First Name: yello	Re-Send Verification Email
Last Name: blue	
Login Email: yello@demosphere.com	

Confirmation change was accepted